

# International Etchells Bedrock Trophy



**Saturday 21 and Sunday 22 July 2018**

**Organizing Authority (OA): Island Sailing Club  
in conjunction with the Cowes Etchells Fleet**

## Sailing Instructions

**1. Rules**

The regatta will be governed by the rules as defined in *The Racing Rules of Sailing* (RRS), the rules of the International Etchells Class Association, the Notice of Race and these Sailing Instructions.

**2. Notices to Competitors**

Notices to competitors will be posted on the Official Notice board at the Island Sailing Club and on the notice board at Cowes Yacht Haven.

**3. Changes to Sailing Instructions**

Any change to the Sailing Instructions made ashore will be posted by 0900 on the day it will take effect, except that any change to the schedule of races will be posted by 2000 on the day before it will take effect.

Oral alterations to the Sailing Instructions on the water may be made by VHF Channel 77 before a Warning Signal in accordance with RRS 90.2 (c).

**4. Signals Made Ashore**

4.1 Signals made ashore will be displayed at the Cowes Yacht Haven flagstaff and may be repeated at the ISC roof top flagstaff.

4.2 When flag AP is displayed ashore, '1 minute' is replaced by not less than 45 minutes.' This changes Race Signals AP.

**5. Schedule of Events**

	Briefing at CYH	First Warning Signal	On Shore Event
<b>Saturday 21 July</b> HW Portsmouth 0653 & 1926	<b>0900</b>	<b>1155</b>	
<b>Sunday 22 July</b> HW Portsmouth 0755 & 2027	No briefing	<b>1055</b>	Prizegiving at CYH after racing

Four races are scheduled on Saturday and three on Sunday but maybe altered in the event of an adverse weather forecast. Subsequent races will start as soon as possible after the last boat finishes. No Warning Signal will be made after 1700 on Saturday or 1530 on Sunday unless there is a Postponement or General Recall during a starting sequence.

**6. Class Flags**

The Class flag will be IC Flag E.

**7. Racing Area**

The starting area/committee boat location will be announced on VHF Channel 77 from approximately one hour before the first Warning Signal.

**8. The Course**

The diagrams at the end of these Sailing Instructions show the courses to be sailed below each diagram, including the order in which marks are to be passed and the side on which each mark is to be left.

No later than the Warning Signal, the Race Committee will announce on VHF Channel 77 or display, in a frame on the committee boat, the approximate distance and compass bearing of the first mark. In addition, the course will be displayed or announced on VHF Channel 77 using the single letter and number identifier or a series of two digit identifiers in SI 28 or from the overall list of marks in these Sailing Instructions before the Warning Signal and maybe repeated after the Warning Signal. This changes RRS 27.1.

9. **Marks**

Marks will be black inflatable buoys (Including a white panel with the ISC Burgee). The ODM will be an orange inflatable buoy. If necessary navigation buoys or fixed racing marks listed in the attached list may be used to provide windward/ leeward courses.

10. **The Start**

10.1 **Starting Alert:** Unless an AP is already displayed at the finish of a race, to alert boats that a race will soon begin from the Committee Boat, an orange flag will be displayed with one sound for five minutes before the Warning Signal.

10.2 **Starting Line:** The Starting Line is between a staff displaying an orange flag on the Committee Boat at the starboard end and the course side of the ODM or a staff displaying an orange flag on a Committee Boat or, if necessary, a nearby navigation buoy or fixed racing mark, at the port end.

11. **Recalls and Starting Penalties**

11.1 **Individual Recalls:** Sail numbers of individually recalled boats may be broadcast on VHF Channel 77 as soon as practical. Failure to broadcast sail numbers, or for a boat to hear such broadcast, shall not be grounds for redress. This changes RRS 62.1(a).

11.2 **Late Starting:** A boat starting later than four minutes after her starting signal will be scored Did Not Start (DNS) without a hearing. This changes RRS and A5.

12. **Change of the Next Leg of the Course**

12.1 Changing Race Signals flag 'C' and RRS 33, the position of a laid inflatable mark may be adjusted by up to approximately plus or minus 10 degrees relative to the previous laid mark(s) and up to approximately 300 metres to windward or leeward without signalling in accordance with RRS 33 (a) or (b).

12.2 To change the next leg of the course beyond the tolerances in 12.1, the race committee will lay a new mark (or move the finishing line) and remove the original mark as soon as practicable. When in a subsequent change a new mark is replaced, it will be replaced by an original mark.

13. **Finish**

The finishing line is between the staff or halyard displaying an orange flag on a committee boat and the course side of the ODM of the start line or a finish line the other side of the committee boat as designated or the last mark of the course.

14. **Penalty System**

The first two sentences of RRS 44.1 is changed to: 'A boat may take a One Turn Penalty when she may have broken a rule of Part 2 or RRS 31 while racing. However, when she may have broken a rule of Part 2 while in the zone around a mark other than a starting mark, her penalty shall be a Two Turns Penalty.

15. **Time Limit**

15.1 The Time Limit shall be 70 minutes.

15.2 Boats failing to finish within 10 minutes after the first boat sails the course and finishes may be awarded a finishing position or Did Not Finish without a hearing. This changes RRS 35, and A5.

16. **Protests, Requests for Redress**

16.1 Protest forms are available at the ISC and at the Cowes Yacht Haven. Protests and requests for redress or reopening shall be delivered to the ISC within the protest time limit. Contact mobile phone numbers should be included on the protest form.

16.2 The protest time limit is 90 minutes after the last boat has finished the last race of the day.

- 16.3 Notices will be posted no later than 30 minutes after the protest time limit to inform competitors of hearings in which they are parties or named as witnesses. Hearings will be held in the protest room, located at ISC, beginning at the time posted.
- 16.4 Notices of protests by the race committee or protest committee will be posted to inform boats under RRS 61.1(b).
- 16.5 Breaches of Sailing Instructions 18, 21, 23, 24, 25, 26, 27, and RRS 40 and 55 will not be grounds for a protest by a boat. This changes RRS 60.1(a). Penalties for these breaches may be less than disqualification if the Protest Committee so decides. The scoring abbreviation for a discretionary penalty imposed under this instruction will be DPI. This adds to A11.
- 16.6 On the last scheduled day of racing a request for reopening a hearing shall be delivered:
- (a) within the protest time limit if the requesting party was informed of the decision on the previous day;
  - (b) no later than 30 minutes after the requesting party was informed of the decision on that day. This changes RRS 66.
- 16.7 On the last scheduled day of racing a request for redress based on a Protest Committee decision shall be delivered no later than 30 minutes after the decision was posted. This changes RRS 62.2.
17. **Scoring**  
Seven races are scheduled and four races are required to constitute a series. Changing RRS Appendix A2, one discard will be applied after five races have been completed.
18. **Safety Regulations**
- 18.1 All boats shall sail on starboard tack close to the stern of the committee boat and hail their sail number prior to the start of the first race each day. At the same time, a boat shall notify the race committee if any of their sails carry different sail numbers to their mainsail.
- 18.2 A boat that retires from a race shall notify the race committee as soon as possible on VHF Channel 77, or by hailing an official regatta support boat/rib.
19. **Replacement of Crew or Equipment**
- 19.1 Substitution of competitors will not be allowed without approval of the Race Committee.
- 19.2 Substitution of damaged or lost equipment will not be allowed unless authorised by the Race Committee. Requests for equipment substitution shall be made to the Race Committee.
20. **Equipment and Measurement Checks**  
A boat or equipment may be inspected at any time for compliance with the class rules and Sailing Instructions. On the water, a boat may be instructed by a Race Committee equipment inspector or measurer to proceed immediately to a designated area for inspection.
21. **Official Boats**  
The main Committee Vessels will display the ISC burgee. The RIB will display a red race Committee Flag.
22. **Support Boats**  
Team leaders, coaches and other support personnel shall stay outside areas where boats are racing from the time of the preparatory signal for each start until all boats have finished or retired or the race committee signals a postponement, general recall or abandonment.
23. **Haul-Out Restrictions**
- 23.1 Boats shall be afloat before 1000 on Saturday 21st July.
- 23.2 Boats shall not be hauled out during the event except with and in accordance to the terms of the prior permission of the race committee.
24. **Diving Equipment and Plastic Pools**  
Underwater breathing apparatus and plastic pools or their equivalent shall not be used around competing boats between the end of registration and the end of the regatta.
25. **Radio Communication**  
Except in an emergency, a boat shall neither make radio transmissions while racing nor receive radio communications not available to all boats. This restriction also applies to mobile

telephones. The Race Committee may broadcast information to competitors on VHF Channel 77 both before and during a race. Failure to receive or transmit shall not be grounds for redress. This changes RRS 62.1(a).

**26. Risk Statement**

RRS 4 states: "The responsibility for a boat's decision to participate in a race or to continue racing is hers alone," Sailing is by its nature an unpredictable sport and therefore inherently involves an element of risk. By taking part in this series, each competitor agrees and acknowledges that:

- a. They are aware of the inherent element of risk involved in the sport and accept responsibility for the exposure of themselves, their crew and their boat to such inherent risk whilst taking part in the series;
- b. They are responsible for the safety of themselves, their crew, their boat and their other property whether afloat or ashore;
- c. They accept responsibility for any injury, damage or loss, to the extent caused by their own actions or omissions;
- d. Their boat is in good order, equipped to sail in the series and they are fit to participate;
- e. The provision of a race management team, patrol boats and other officials and volunteers by the event organiser does not relieve them of their own (the competitors') responsibilities;
- f. The provision of patrol boat cover is limited to such assistance, particularly in extreme weather conditions, as can be practically provided in the circumstances.
- g. It is their responsibility to familiarise themselves with any risks specific to this venue or this event drawn to their attention in any rules and information produced for the venue or event and to attend any safety briefing held for the event.

They are responsible for ensuring that their boat is equipped and seaworthy so as to be able to face extremes of weather; that there is a crew sufficient in number, experience and fitness to withstand such weather; and that the safety equipment is properly maintained, stowed and in date and is familiar to the crew.

**27. Insurance**

Each participating boat shall be insured with valid third-party liability insurance with a minimum cover of £3,000,000 per event.

**28. Two Digit Identifiers**

**9A** Windward Laid Mark

**9B** Windward Spreader Mark

**9C** Leeward Laid Mark

**9D** Leeward Spreader Mark

**9E** Leeward Gate (Above the start line)


**9F** Leeward Gate (Below the start line)


**9G** Start / Finish Line (#)



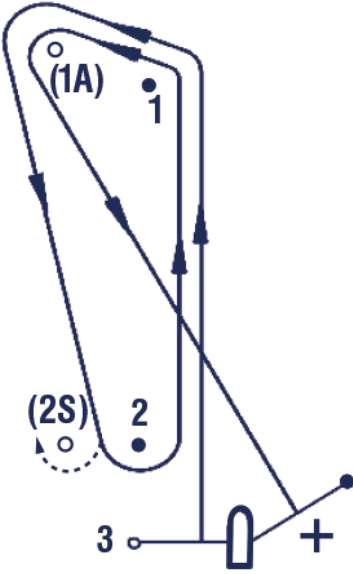
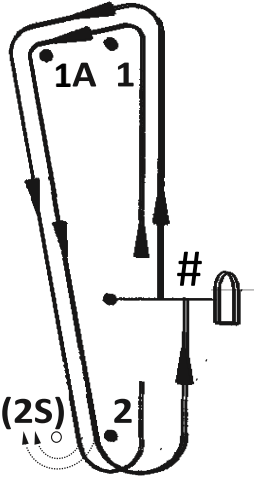
**9H** Finish Line (+)

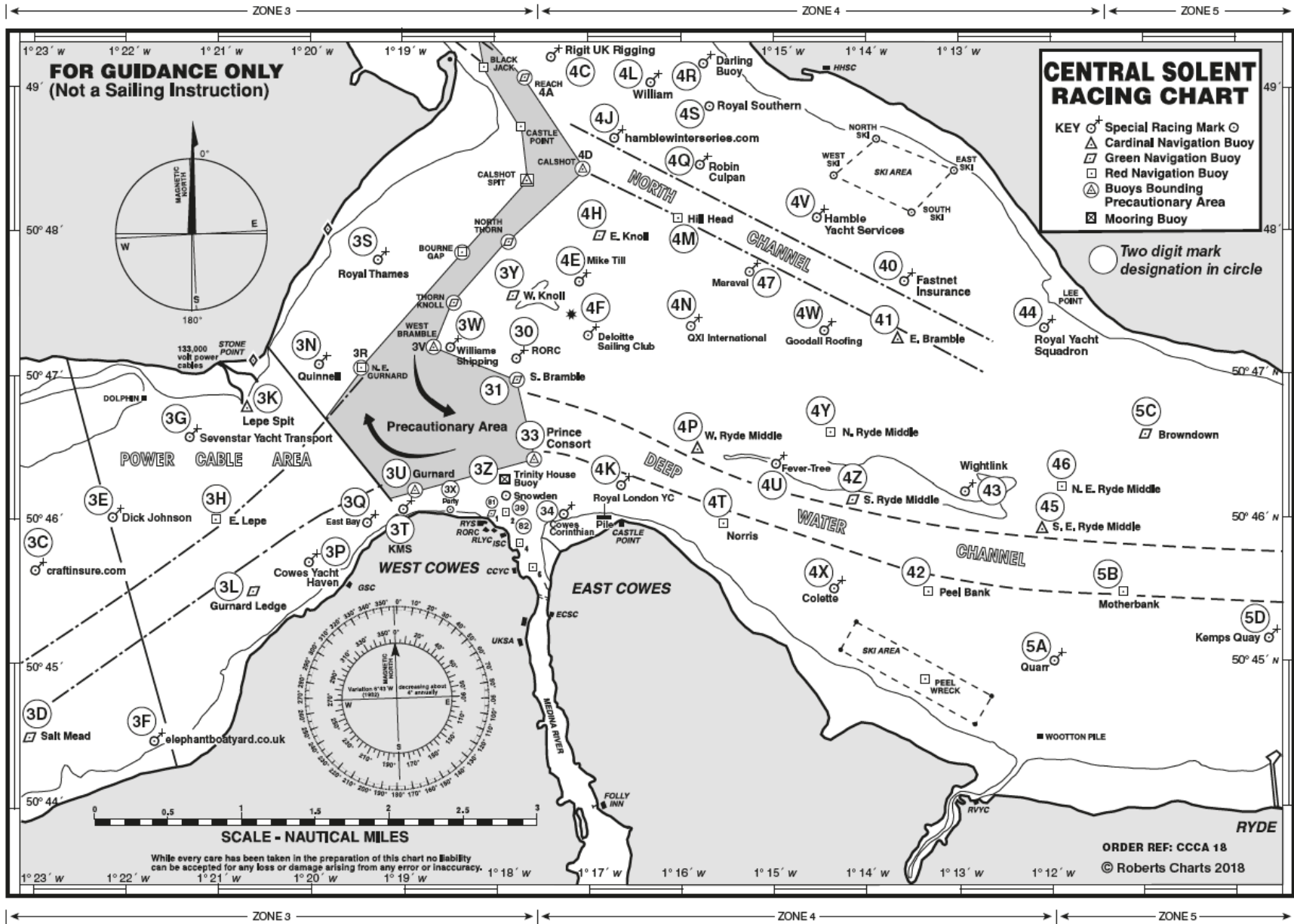
The course to be sailed is shown below each course diagram. Diagrams are not to scale.

- Leave all marks to port unless indicated (S) to starboard.
- # is the Start / Finish Line
- Marks shown in brackets () will not be laid unless the designated symbol is displayed or announced as follows:

 displayed means a Spreader or Offset Mark (1A) is laid

 displayed means the Leeward Mark is a gate

COURSE A	COURSE B	COURSE C	COURSE D
			
<p>A1 Start - 1 - (1A) - 2(2S) - 1</p> <p>A2 Start - 1 - (1A) - 2(2S) - 1 - (1A) - 2(2S) - 1 (shown above)</p>	<p>B1 Start - 1 - (1A) - #</p> <p>B2 Start - 1 - (1A) - 2(2S) - 1 - (1A) - # (shown above)</p>	<p>C1 Start - 1 - (1A) - +</p> <p>C2 Start - 1 - (1A) - 2(2S) - 1 - (1A) - + (shown above)</p>	<p>D1 Start - 1 - (1A) - 2(2S) - #</p> <p>D2 Start - 1 - (1A) - 2(2S) - 1 - (1A) - 2 - # (shown above)</p>



## Central Solent Course Mark Two Digit Identifiers 2018

3C	craftinsure.com	31	South Bramble	4W	Goodall Roofing
3D	Salt Mead	33	Prince Consort	4X	Colette
3E	Dick Johnson	34	Cowes Corinthian	4Y	North Ryde Middle
3F	elephantboatyard.co.uk	39	Snowden	4Z	South Ryde Middle
3G	Sevenstar Yacht Transport	4C	Right UK Rigging	40	Fastnet Insurance
3H	East Lepe	4E	Mike Till	41	East Bramble
3J	Baxters ( <i>Cowes Week only</i> )	4F	Deloitte Sailing Club	42	Peel Bank
3K	Lepe Spit	4H	East Knoll	43	Wightlink
3L	Gurnard Ledge	4J	hamblewinterseries.com	44	Royal Yacht Squadron
3N	Quinnell	4K	Royal London YC	45	S E Ryde Middle
3P	Cowes Yacht Haven	4L	William	46	N E Ryde Middle
3Q	East Bay	4M	Hillhead	47	Maraval
3S	Royal Thames	4N	QXI International	5A	Quarr
3T	KMS	4P	West Ryde Middle	5B	Motherbank
3U	Gurnard	4Q	Robin Culpan	5C	Browndown
3W	Williams Shipping	4R	Darling Buoy	5D	Kemps Quay
3X	Party	4S	Royal Southern	82	No 2 Cowes Harbour Buoy
3Y	West Knoll	4T	Norris	93	RYS ODM Finishing Mark
3Z	Trinity House Buoy	4U	Fever Tree		
30	RORC	4V	Hamble Yacht Services		